

# QUADRAT ANNUAL SCIENCE MEETING 10 OCTOBER 2023

1495



UNIVERSITY OF  
ABERDEEN



QUEEN'S  
UNIVERSITY  
BELFAST



Natural  
Environment  
Research Council

# QUADRAT ANNUAL SCIENCE MEETING 10 OCTOBER 2023

INTERNSHIPS  
INFORMATION  
& STUDENT  
TALKS

1495



UNIVERSITY OF  
ABERDEEN



QUEEN'S  
UNIVERSITY  
BELFAST



Natural  
Environment  
Research Council

# AGENDA

- Overview
- Eligible internships
- Funding & Structure
- CASE vs non-CASE
- International Internships
- Internships for International Students
- Student speakers

# Internships

## COHORTS 1 & 2

- Internships are **not compulsory** due to the disruption caused by the Covid-19 pandemic

## COHORTS 3, 4, 5 & 6

- Internships are a **compulsory** element of the QUADRAT DTP training framework for professional and skills development to enhance employability

## KEY DETAILS

- Internships can be **governmental** or **regulatory, research** or **commercial**
- Used to develop valuable **transferrable** skills for **professional** development
- Ideally between months 12 & 36 of your PhD
- Students to source internships – help is available
- Time for the internship has already been factored into the 42-month studentship

## MORE INFORMATION

- Different rules for CASE & non-CASE
- Full details are on our website: training tab > [annual science meeting](#) > internships module
- The [internships module](#) includes:
  - Why internships are valuable
  - How it interconnects with your PhD research
  - Logistics
  - Internships for international students
  - Financing an internship
  - Sourcing an internship
  - FAQs

## WHAT IT IS...

- Ideally **governmental** or **regulatory, research** or **commercial**
- Professional experience – opportunity to trial a potential career path
- A standalone project separate from your PhD – can be broadly related
  - i.e. an area that leads into your research, or development of relevant skills)
- Professional, technical and transferrable skills development
- It should bring added value – enhance your future employability

## WHAT IT IS NOT...

- In a Higher Education environment e.g. teaching / demonstrating
- Cannot be directly related to your PhD research e.g. field work or data collection for your PhD

# Eligible Internships

## • GOVERNMENTAL

- Government teams / initiatives / affiliated organisations
- Reporting and policy making
- E.g. Open Innovation Team, European Parliament, Geological Survey of Northern Ireland (GSNI), Marine Science Scotland (MSS), JNCC, City Councils

## • REGULATORY

- Regulatory organisations / policy makers
- Developing and enforcing policies
- E.g. SEPA, The Environment Agency, Aberdeen Harbour Board, the Agriculture and Horticulture Development Board

## • RESEARCH

- Research institutes / centres / organisations
- Public sector / independent research establishments
- Charities / Not for profit
- Heritage / restoration organisations
- E.g. AFBI, James Hutton Institute, Forest Research, Scottish National Heritage (SNH)

## • COMMERCIAL

- Industry service providers
- Large scale
- E.g. Arup, Syngenta, Tillhill Forestry, CarlZeiss Microscopy

# Funding & Structure

- £850 pp from QUADRAT – travel and accommodation
  - Email [quadrat@abdn.ac.uk](mailto:quadrat@abdn.ac.uk)
- Use of RTSG is prohibited
  - As is not directly related to your PhD research
- You cannot receive a stipend and salary at the same time:
  - Unpaid internship – do not suspend studies, continue to receive stipend
  - Paid internship - must suspend studies, stipend paused, receive salary

- There is flexibility in how you choose to structure your internship:
  - 1/2/3 days per week
  - Full time or part time
  - Multiple providers or just one



## CASE

- 3-18 months
- Should be undertaken **at your CASE partner** organisation – this is one of the terms of a CASE Partnership
- Should be a **stand-alone project** separate from your PhD research but likely more related to your PhD than non-CASE internships would be
- Unpaid – stipend will continue
- Expectation that CASE partner will provide **in-kind contributions** e.g. travel expenses, care hire for fieldwork etc

## Non-CASE

- 1-3 months
- Should be a **stand-alone project** separate not directly related to your PhD research
- If unpaid – don't suspend, stipend will continue
- If paid – suspend studies, receive salary
- Should ideally make use of our local / national stakeholders and partners

# International Internships

- Overseas internships are permitted; however, you will need to consider the following:
  - How you will fund it – QUADRAT can only offer an £850 contribution towards travel and accommodation so you may need to seek external funding sources
  - You are not permitted to use your RTSG – could an internship be tied in with existing travel arrangements e.g. an organisation local to your field location(s)?
  - Your accommodation/rental agreement in Aberdeen/Belfast – will you be paying double rent? How will you manage this?
  - Visa requirements and work limits (if applicable) – see next slide
  - Off campus paperwork

# International Students

- Students on a student visa must maintain their **full-time student status** and can therefore only complete an internship on a **part-time basis**,
- The internship must therefore be undertaken only via the **work hour limit permitted by the visa**, **typically 20 hours per week** in term time. If you wanted to undertake more hours, you could do this if you were on **authorised leave** utilising some of your 60 permitted days.
- If a student is not progressing with their PhD study this could lead to visa withdrawal.
- The immigration team advise that this is very much on a case-by-case basis – to advise further they would need more information about the proposed internship, particularly if it were based internationally.

# International Students

- This advice was provided by the University of Aberdeen immigration and compliance team, however it is essential that you double **check all of the discussed terms directly with the visa & immigration team at your host institution** because individual circumstances may apply. These specialist teams will be able to confirm all work restrictions that apply to your visa.
- University of Aberdeen: [immigration compliance\(opens in a new tab\)](#) / [immigration@abdn.ac.uk](mailto:immigration@abdn.ac.uk)
- Queen's University Belfast: [visas and immigration](#)

# Next Steps

- Once you have found an internship, please email [quadrat@abdn.ac.uk](mailto:quadrat@abdn.ac.uk)
  - We send you a form to complete
  - This will be reviewed by DTP management
- Claiming your £850 funding:
  - Charge to RTSG in the first instance
  - Send receipts to [quadrat@abdn.ac.uk](mailto:quadrat@abdn.ac.uk) to arrange reimbursement
- If you need help finding an internship, please get in touch

A landscape photograph featuring a vibrant rainbow in the sky, three white wind turbines in the middle ground, and a lush green field of plants in the foreground. The image is framed by a semi-transparent white rectangle with black corner brackets.

# STUDENT SPEAKERS

The background of the slide features a vibrant green field in the foreground, with a line of trees in the middle ground. In the distance, several white wind turbines are visible against a bright sky. A prominent rainbow arches across the upper right portion of the image. The entire scene is overlaid with a semi-transparent white rectangle that contains the text.

**ANTON KUECH**

**EUROPEAN PARLIAMENT**

# Exploring the Depths: Navigating Fisheries and Marine Policy in the EU

**Anton Neil Kuech**

Five-month placement at the European Parliament - Policy Department for Structural & Cohesion Policies





# Background

## Schuman traineeship offers in the European Parliament

### Application

- Advert for marine policy post - <https://ep-stages.gestmax.eu/search>
- Opportunistic application
- Surprise interview call
- Shortlisted
- Acceptance
- Move to Brussels in October 2022

### Traineeship

- Duration of 5 months
- Remuneration approximately equivalent to UKRI PhD stipend plus travel and mission allowance
- Comprehensive health insurance

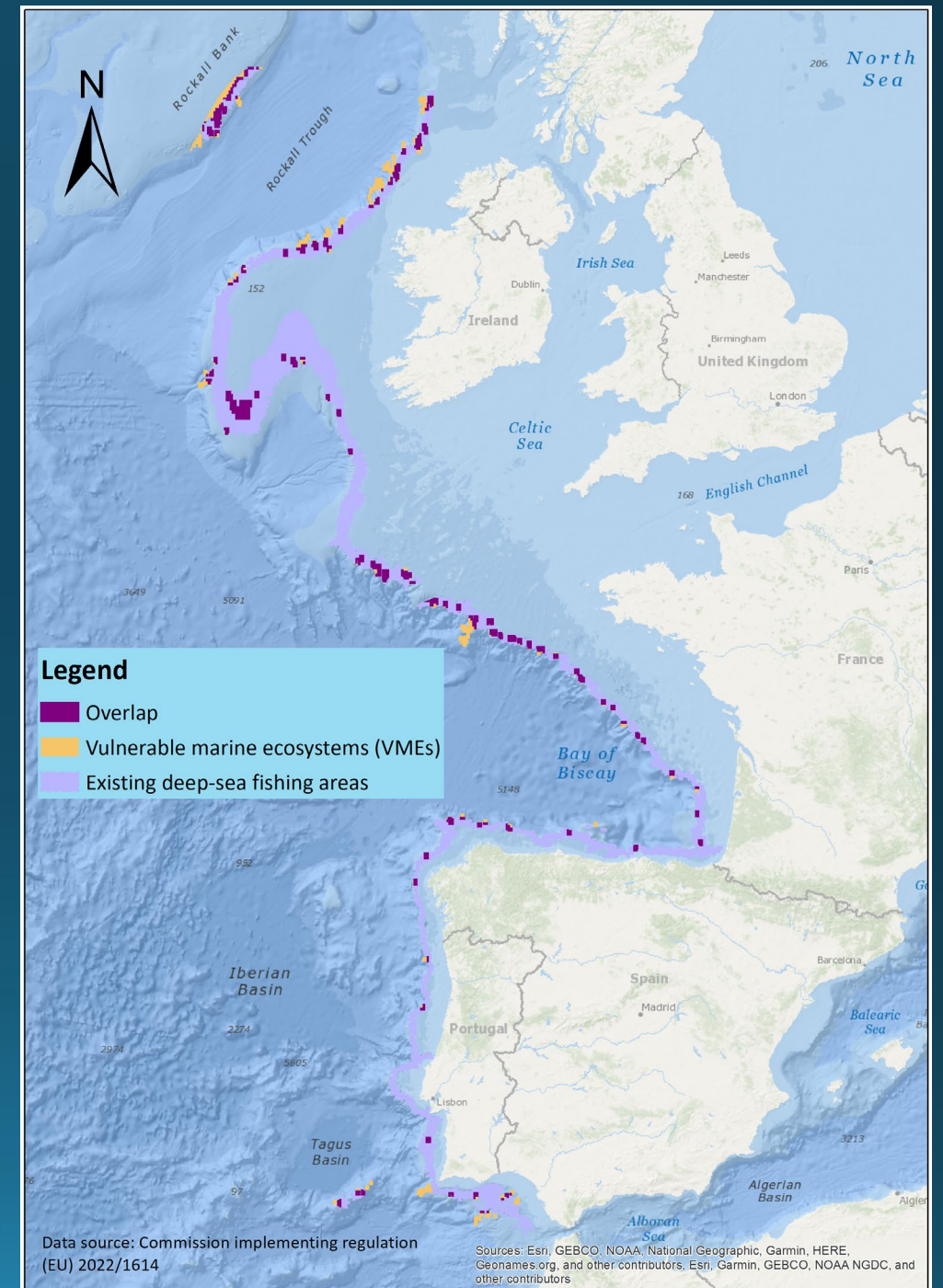
# My work

- Policy Department for Structural and Cohesion Policies → supporting the Committee on Fisheries (PECH)
- In a nutshell: managing the (marine) science-policy interface
- Procurement of external studies
- In-house policy briefings, in-depth analyses and studies
- Supporting the MEPs in the legislative process with “foresight-based policy analysis”



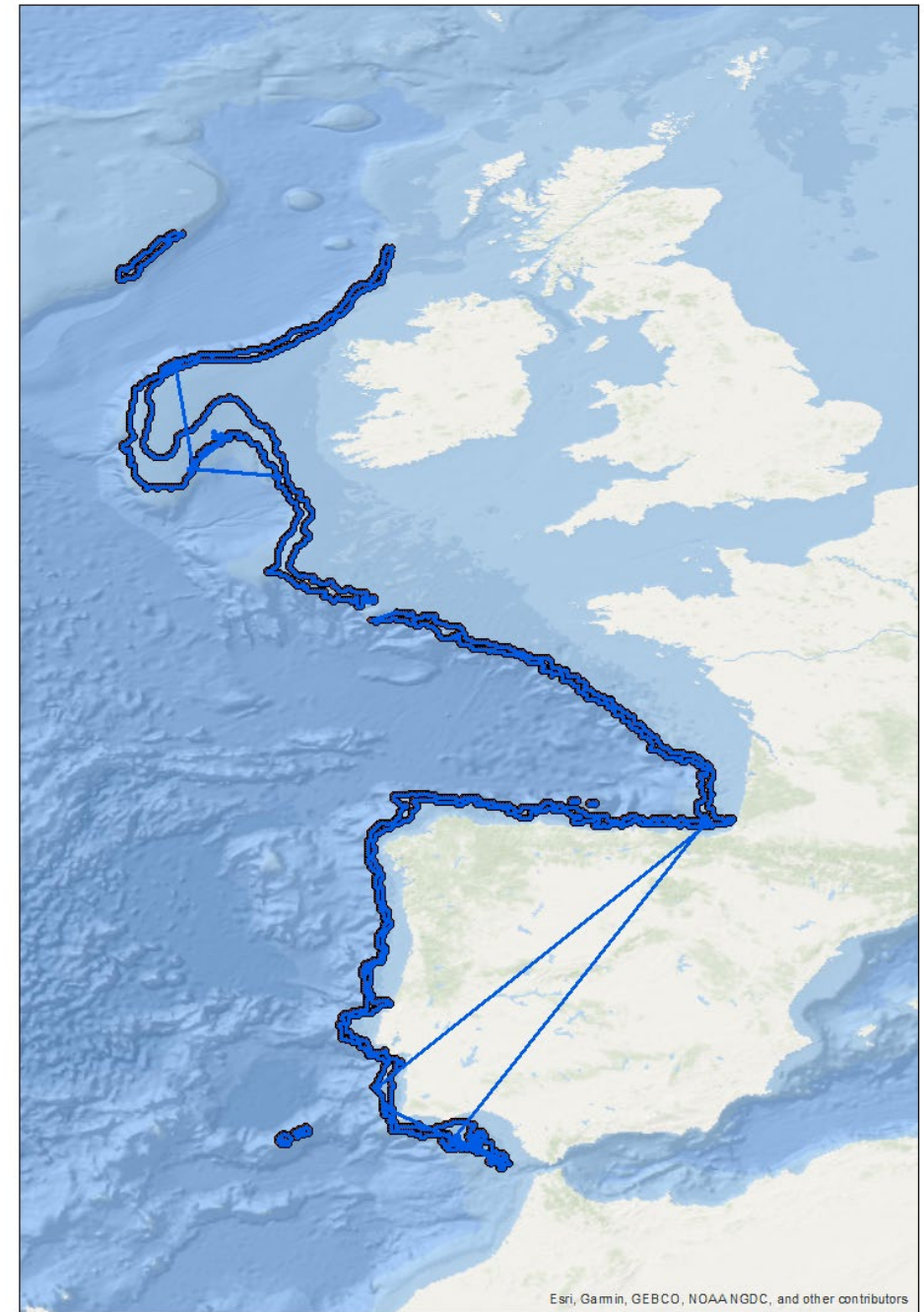
# Deep-sea Access Regulation (2016/2336)

- The 2016 regulation included a ban on bottom trawling at deep-sea sites below 800 m
- Identification of vulnerable marine ecosystems (VMEs) in September 2022 as part of Implementing Regulation (2022/1614)
- 4-year delay
- Designated VMEs include a ban on fishing operations with bottom gears below a depth of 400 metres.



# Deep-sea Access Regulation (2016/2336)

- Work of the policy department in providing evidence-based advice and briefings
  - Heatmap of affected areas
  - Spatial analysis:
    1. Existing deep-sea fishing areas in EU waters: 187,039 km<sup>2</sup>
    2. Total area of vulnerable marine ecosystems (VMEs): 40,971 km<sup>2</sup>
    3. Overlap of VMEs and deep-sea fishing areas: 19,383 km<sup>2</sup>
- Mistakes in legislative files can happen!



# Internships as a PhD student

- It's a great opportunity!
- Gain valuable experience in your field
- Expand your skills and knowledge
- You have the potential to significantly expand your network
- Explore different career options
- Increase your chances of getting a job after graduation
- QUADRAT support of up to £850 to cover travel/accommodation costs
- Maintaining an open mind and a willingness to explore new areas is key
- We need more scientists contributing to the policymaking process
- Policy jobs require a diverse skill set, including good communication skills, political acumen, adaptability, and strong negotiation and presentation skills

The background of the slide features a lush green field in the foreground, with a line of trees in the middle ground, and several white wind turbines in the distance. A vibrant rainbow arches across the sky, adding a colorful touch to the scene. The entire image is overlaid with a semi-transparent white rectangle that contains the text.

**KARENDEEP SIDHU**

**ROYAL SOCIETY OF BIOLOGY  
UKRI POLICY INTERNSHIP SCHEME**



Royal Society of  
**Biology**



Karendeep Sidhu

[Royal Society of Biology](#)

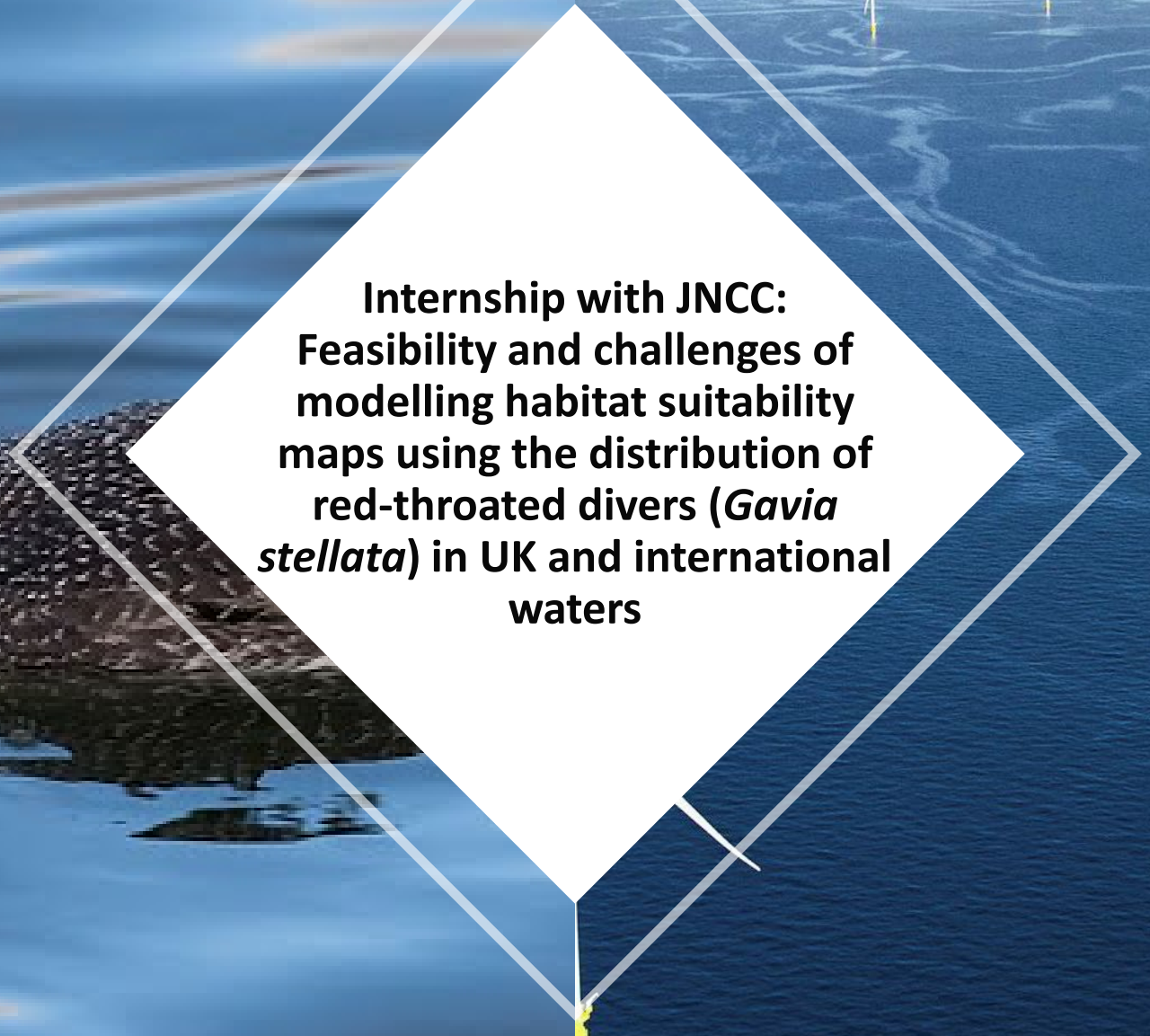
[UKRI Policy Internship scheme](#)

The background of the slide features a soft-focus landscape. In the foreground, there is a field of green plants, possibly a crop field. In the middle ground, several white wind turbines are visible against a hazy sky. A vibrant rainbow arches across the upper portion of the image. The entire scene is overlaid with a semi-transparent white rectangular area that contains the text.

**NIAMH ESMONDE**

**JOINT NATURE CONSERVATION COMMITTEE  
UKRI POLICY INTERNSHIP SCHEME**





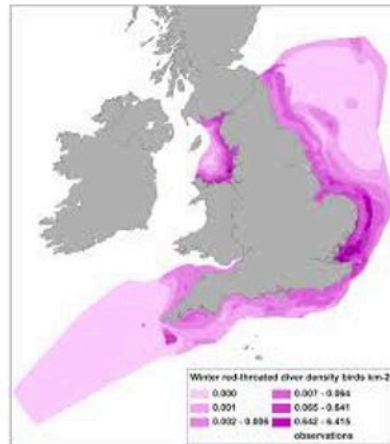
**Internship with JNCC:  
Feasibility and challenges of  
modelling habitat suitability  
maps using the distribution of  
red-throated divers (*Gavia  
stellata*) in UK and international  
waters**

# 3 month internship with the Joint Nature Conservation Committee

- Aim: to explore the existing modelling techniques and data availability for the production of habitat suitability maps for overwintering red-throated divers



RTD distribution



Offshore wind farm locations



JNCC Report

Feasibility and challenges of modelling habitat suitability maps for wintering red-throated divers (*Gavia stellata*) in UK and international waters

Niamh Esmonde and Kerstin Kober

April 2021

© JNCC, Peterborough 2021

# How did I go about getting an internship?

- Email from QUADRAT/NERC in **September 2020** about opportunities for an internship on policy-making from an array of different organisations in the UK
- Found that JNCC had a number of internships available.
- Submitted an application for an internship with JNCC in **October 2020**.
- Application was unusual in that it required:
  1. **Answer questions about my PhD and why I wanted to do an internship with the JNCC** e.g. *“Explain why you are applying to your chosen host partner”, “What skills do you hope to gain from this internship”...*
  2. **Write a summary policy briefing in the style of a POSTnote** – Biodiversity conflict issues: Policy note for habitat protection of Bull Island, Dublin

# Thank you!

Advice, guidance and support:

- Kerstin Kober
- Rebecca Hall
- Jason Matthiopoulos
- Mark Trinder
- Emma Busby

The background of the slide features a soft-focus landscape. In the foreground, there is a field of green plants, possibly a crop field. In the middle ground, several white wind turbines are visible against a hazy sky. A vibrant rainbow arches across the upper right portion of the image. The entire scene is overlaid with a semi-transparent white rectangle that contains the text.

# FENELLA WOOD

CONVENTION ON THE CONSERVATION OF MIGRATORY  
SPECIES OF WILD ANIMALS

- [Convention on the Conservation of Migratory Species of Wild Animals \(CMS\)](#)
- United Nations Environment Programme (UNEP)
- Aquatic Species Team for the Migratory Sharks Memorandum of Understanding
  - Reviewing and editing outreach and capacity building documents and posters, e.g. ID guides
  - Prepared capacity building presentations
  - Minute-taking for CMS wide meetings
  - Social media content
  - Wrote documents in preparation for MOS4 (4<sup>th</sup> Meeting of the Signatories to the Sharks MoU)
  - Created a national reporting form for MOS4
    - Signatories had to report on progress between triennial meetings
  - Further developed a Single Species Action Plan for the Angelshark in the Mediterranean Sea
    - Writing content and meetings with experts to collaborate and finalise it



Contact Fenella for  
more information: [f.wood1.19@abdn.ac.uk](mailto:f.wood1.19@abdn.ac.uk)



1495



UNIVERSITY OF  
ABERDEEN



QUEEN'S  
UNIVERSITY  
BELFAST



Natural  
Environment  
Research Council